

# School Facilities and Grade Organization Study

## **Oneida City School District**

Advisory Committee

September 19, 2023



Castallo and Silky LLC  
Stephen Bocciolatt, Consultant

# Agenda

- Review Minutes from 8/29/2023 Meeting
- Background Information: (6:30 pm – 6:45pm)
- Discussion: Possible Options – Closing an Elementary School

- ❖ Three Elementary School Buildings

- Option 3 - Three K-5 Neighborhood Schools
- Option 4 - Three Grade Center Schools

Transition to a Grade Center Plan (Grades K-1; 2-3; 4-5)

(1) School - Grades K-1

(1) School - Grades 2-3

(1) School - Grades 4-5

Session I: Option 4 - Three Grade Center Schools (6:45 - 7:45 pm)

Session II: Option 3 - Three K-5 Neighborhood Schools (7:45 - 8:30 pm)

- Public Questions/Comments
- Next Meeting Dates/Locations/Topics

# Grade Configuration Options

## Four Elementary School Buildings

- Option 1 - Status Quo - (4) K- 5 Neighborhood Schools
- Option 2 - Transition to a Grade Center Plan (Grades K-2; 3-5)
  - (2) buildings - grades K-2
  - (2) buildings - grades 3-5

## Three Elementary School Buildings

- Option 3 - Close an Elementary School - (3) K-5 Neighborhood Schools
- Option 4 - Close an Elementary School - (3) Grade Center Schools
  - Transition to a Grade Center Plan (Grades K-1; 2-3; 4-5)
    - (1) School - Grades K-1
    - (1) School - Grades 2-3
    - (1) School - Grades 4-5

## Other Possible Options, if any – To Be Determined

# Grade Configuration

## Option 1: Status Quo – Keep Four K-5 Elementary Schools

In the near future, there will be a single classroom section in each grade in two K-5 school buildings.

There are four elementary attendance zones, but approximately 21 % of students are transported out of their attendance zone.

There is unequal class size between the four school buildings.

Special education classrooms (15-1, 12-1-1 , 8-1-1 and 6-1-1) are housed in two of the four school buildings.

Four Full day Pre-K classrooms are housed in one school building.

Financial – Less cost savings would occur vs closing an elementary building.

# Grade Configuration

## Option 2: Keep Four School Buildings, Transition to Grade Center Plan (K-2; 3-5; K-2; 3-5)

In this configuration there will be two elementary attendance zones instead of the four attendance zones currently used for the four K-5 elementary schools.

Students in each attendance zone would attend school together in one building for grades K-2 and that same group of students would continue to a second school 3-5 (sister schools).

- For example:
  - WP and NB residences could be one attendance zone. In this scenario, students would attend WP for grades K-2 and NB for grades 3-5.
  - SS and DV residences could be the second attendance zone. Students in this attendance zone would attend SS for grades K-2 and DV for grades 3-5.

Balancing class size (three sections per grade level, three grade levels per building) within each building would be somewhat easier and also district-wide with two attendance zones vs. four attendance zones.

Four full day Pre-K classrooms could be housed in the two K-2 school buildings.

Special education classrooms (15-1, 12-1-1, 8-1-1 and 6-1-1) are housed in all of the four school buildings and aligned as much as possible by the grade level bands (K-2; 3-5). WP still has the most special education classrooms of the four buildings.

Transportation – impact of any grade configuration changes needs to be determined.

Financial – Less cost savings would occur vs closing an elementary building.

# Grade Configuration

## Option 3: – Close an Elementary School Three School Buildings (K-5)

In this configuration there will be three elementary attendance zones instead of four attendance zones currently used for the four K-5 elementary schools.

Balancing class size would be somewhat easier with three attendance zones vs. four attendance zones.

Is there enough space in each building to house elementary students in three schools with the current programs.

Twelve grade level sections (two sections per grade level, six grade levels per building) in each building is tight with the additional number of special education classrooms and other support services programs.

Special education classrooms (15-1, 12-1-1 , 8-1-1 and 6-1-1) are housed in each of the three school buildings. WP still has the most special education classrooms of the four buildings.

Four full day Pre-K classrooms do not currently fit in any of the three school buildings based on the current student enrollment and special education programs.

Transportation – impact of any grade configuration changes needs to be determined.

Financial – Significant savings can be realized by closing an elementary school and either creating a three grade center configuration (K-1;2-3;4-5 ) or a K-5 grade configuration with three neighborhood schools.

# Grade Configuration

## Option 4: – Close an Elementary School Three School Buildings (K-1; 2-3; 4-5)

In this configuration there are no elementary attendance zones. Transportation would be provided to an elementary school based on the grade level of the student.

Balancing class size would be able to be done with all sections of a grade level in one building.

Is there enough space in each building to house elementary students in three schools?

Twelve grade level sections (six sections per grade level, two grade levels per building) is tight with the additional number of special education classrooms and other support services programs.

Special education classrooms (15-1, 12-1-1, 8-1-1 and 6-1-1) are housed in each of the three school buildings and aligned as much as possible by the grade level bands (K-1; 2-3; 4-5). WP still has the most special education classrooms of the four buildings.

Four full day Pre-K classrooms do not currently fit in any of the three school buildings based on the current student enrollment and special education programs.

Transportation – impact of any grade configuration changes needs to be determined. In this configuration, start and end times for students may be staggered. Currently the middle school and high school have staggered times.

Financial – Significant savings can be realized by closing an elementary school and either creating a three grade center configuration (K-1;2-3;4-5 ) or a K-5 grade configuration with three neighborhood schools.

# District Office (DO) Building Options

- If an elementary school is closed, should the district .....
  - Option 1: Keep the building for district use  
(i.e. Full-day Pre-K program; district offices, other)
    - Move full-day Pre- K program
    - Move district offices
      - ❖ Sell or lease district office building
  - Option 2: Lease the elementary building to another organization
  - Option 3: Sell the elementary building
- Costello Transportation Building
  - Upstairs area - currently leased by BOCES



## District Office (DO) Building Options

- If an elementary school is closed, should the district .....
  - Option 1: Keep the building for district use  
(i.e. Full-day Pre-K program; district offices, other)
    - Move full-day Pre- K program
    - Move district offices
      - ❖ Sell or lease district office building

**Note:** If the district keeps the elementary building, this option **decreases the estimated staff savings** shown in a previous slide. A reduction in savings would depend on the program delivery of the Pre-K program (staff coverage, specials, custodial staff, teacher aides, food service).

# Draft Building Map

Grade Center Configuration  
Three Schools  
(K-1; 2-3; 4-5)

# Grade Center Configuration

## Three School Buildings: (K-1); (2-3); (4-5) (36 Classroom Sections)

- Twelve grade level classrooms in each building
  - Six sections in each of the two grade levels
- **Nine** self-contained special education classrooms
  - Students placed in buildings with other students in similar grade levels
    - ❖ In K-1, **four** separate special education classrooms
      - 15-1 (K-1); 12-1-1 (K-1); 8-1-1 (K-**2**); 6-1-1 (K-1)\*
    - ❖ In 2-3, **two** separate special education classrooms
      - 15-1 (2-3); 12-1-1 (2-3)
    - ❖ In 4-5, **three** separate special education classrooms
      - 15-1 (4-5); 12-1-1 (4-5); 8-1-1 (**3**-5)

# Grade Center Configuration

## Three School Buildings: (K-1); (2-3); (4-5)

### (36 Classroom Sections)

- Band and Chorus

- No band or chorus in K-1 building
- No band or chorus in 2-3 building
- **All** band and chorus in the 4-5 building

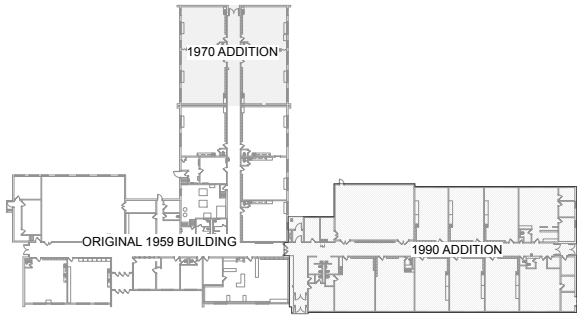
- Art and Music Classrooms

- Separate art and music classrooms in WP (2)
- **No** art or music classroom shown in SS (0)
- Separate art and music classrooms in NB (2)
- DV, a **shared** art/music classroom(1) and band on stage

# Grade Center Configuration

Three School Buildings: (K-1); (2-3); (4-5)  
(36 Classroom Sections)

- Four Pre-K Classrooms in a Separate School Building. These classrooms do not currently fit in any of the three school buildings based on the current student enrollment and the number of special education classrooms.
- Space for Support Services



FIRST FLOOR VINTAGE PLAN

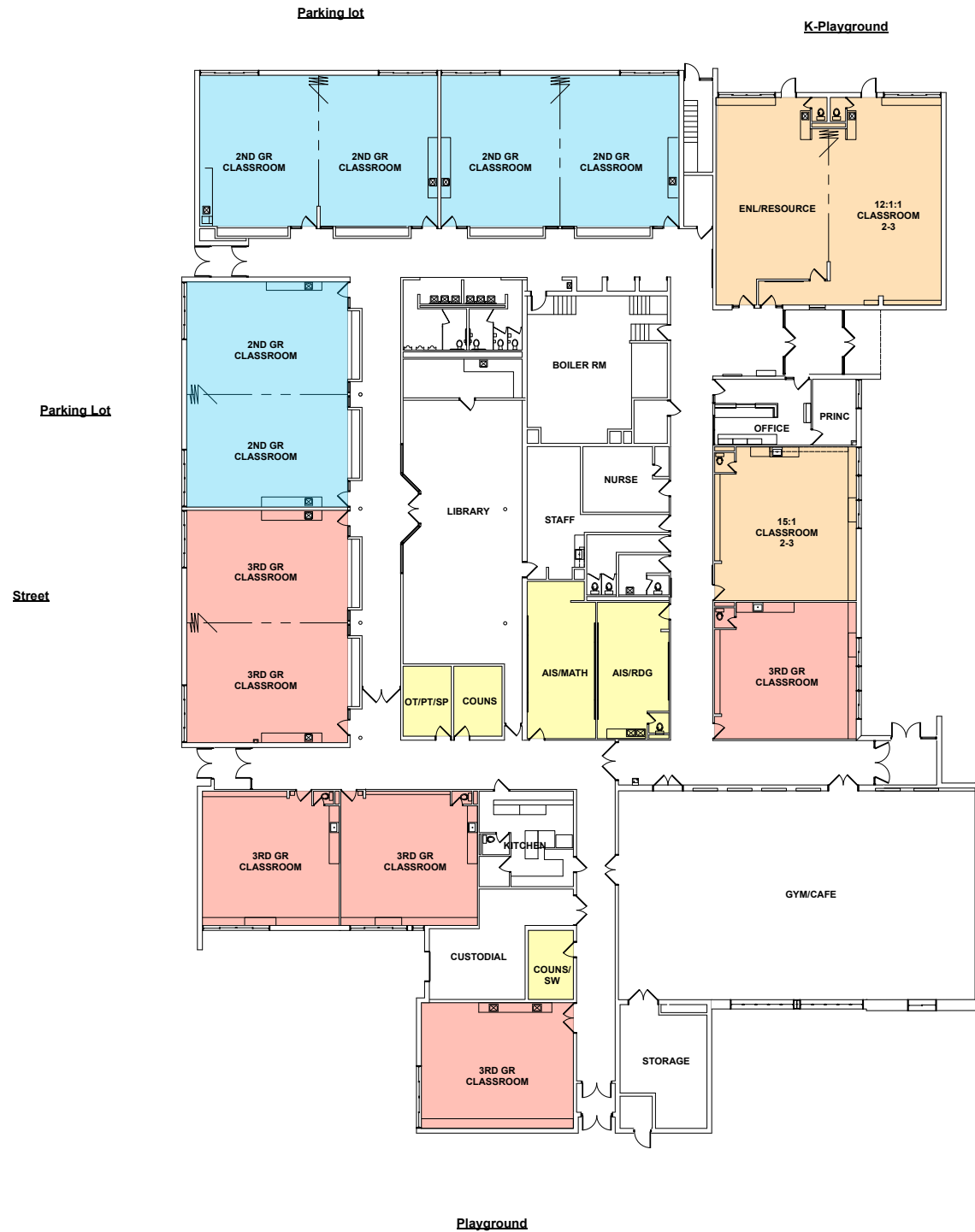


FIRST FLOOR PLAN

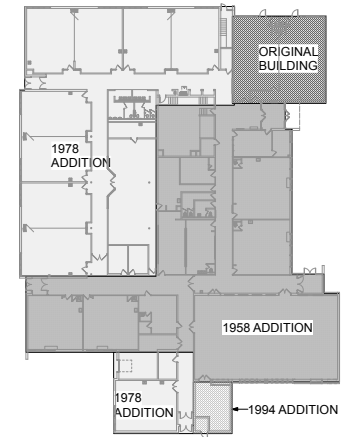
Pick-up Drive

Parking Lot

K-1



OVERALL FLOOR PLAN

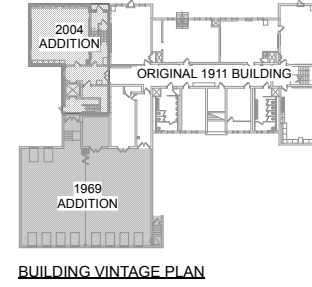


FIRST FLOOR VINTAGE PLAN

**LEGEND**

<span style="display:inline-block; width:15px; height:15px; background-color:lightblue; border:1px solid black;"></span> 2ND GRADE	<span style="display:inline-block; width:15px; height:15px; background-color:orange; border:1px solid black;"></span> SPECIAL EDUCATION
<span style="display:inline-block; width:15px; height:15px; background-color:lightcoral; border:1px solid black;"></span> 3RD GRADE	<span style="display:inline-block; width:15px; height:15px; background-color:yellow; border:1px solid black;"></span> SUPPORT SERVICES

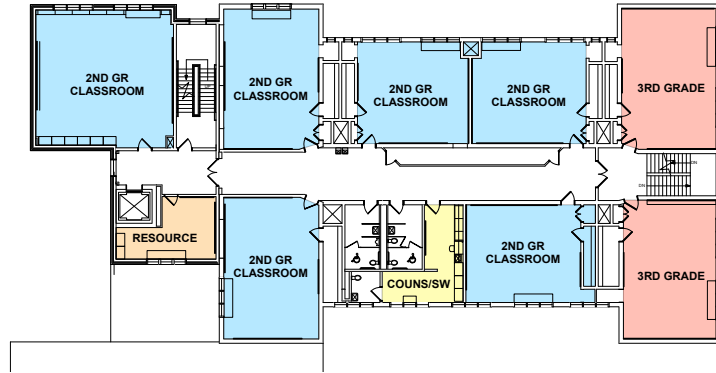
(6) 2ND CLASSROOMS  
 (6) 3RD GRADE CLASSROOMS  
 (3) SPECIAL ED CLASSROOMS  
 (5) SUPPORT SERVICES  
 (0) FULL SIZE SPECIAL SUBJECT CLASSROOMS  
 (NO ART OR MUSIC CLASSROOMS SHOWN)



**LEGEND**

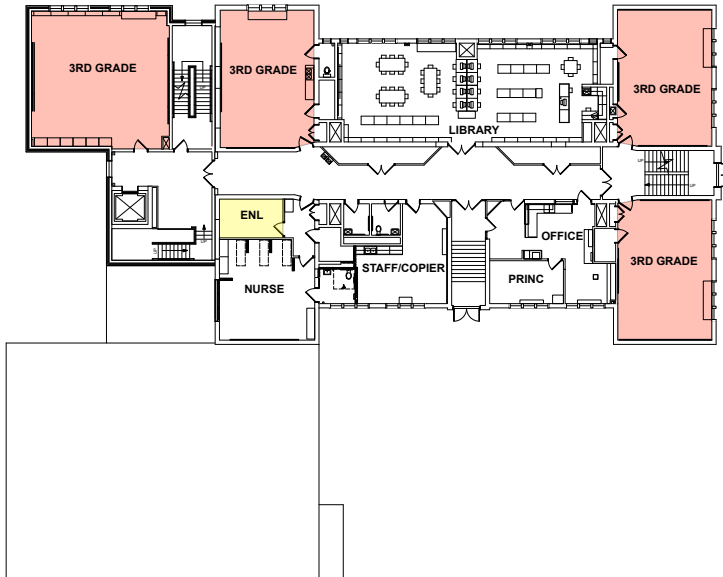
<span style="display:inline-block; width:15px; height:15px; background-color:lightblue; border:1px solid black;"></span> 2ND GRADE	<span style="display:inline-block; width:15px; height:15px; background-color:orange; border:1px solid black;"></span> SPECIAL EDUCATION
<span style="display:inline-block; width:15px; height:15px; background-color:lightcoral; border:1px solid black;"></span> 3RD GRADE	<span style="display:inline-block; width:15px; height:15px; background-color:yellow; border:1px solid black;"></span> SUPPORT SERVICES
	<span style="display:inline-block; width:15px; height:15px; background-color:lightpurple; border:1px solid black;"></span> SPECIAL SUBJECT

(6) 2ND GRADE CLASSROOMS  
 (6) 3RD GRADE CLASSROOMS  
 (3) SPECIAL ED CLASSROOMS  
 (1) FULL SIZE SUPPORT CLASSROOM [OT/PT/SPEECH]  
 (5) SUPPORT SERVICES  
 (2) FULL SIZE SPECIAL SUBJECT CLASSROOMS [ART & MUSIC]



Playground

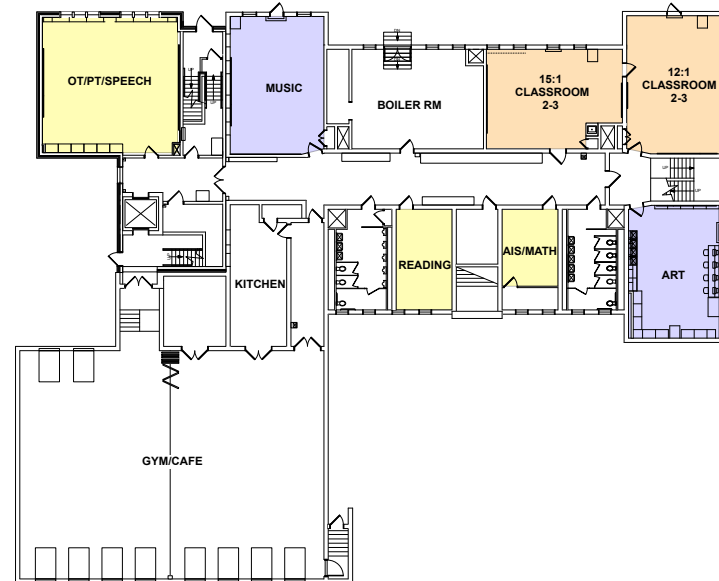
Parking Lot



FIRST FLOOR PLAN

Street

Parking Lot

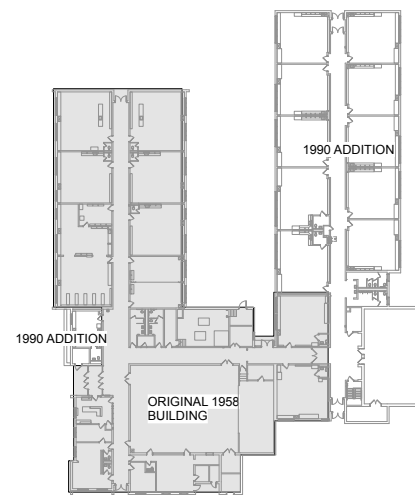


BASEMENT FLOOR PLAN





Bus Loop



FIRST FLOOR VINTAGE PLAN

LEGEND

<span style="display: inline-block; width: 15px; height: 15px; background-color: #ADD8E6; border: 1px solid black; margin-right: 5px;"></span> 4TH GRADE	<span style="display: inline-block; width: 15px; height: 15px; background-color: #FFDAB9; border: 1px solid black; margin-right: 5px;"></span> SPECIAL EDUCATION
<span style="display: inline-block; width: 15px; height: 15px; background-color: #FFA07A; border: 1px solid black; margin-right: 5px;"></span> 5TH GRADE	<span style="display: inline-block; width: 15px; height: 15px; background-color: #FFFF00; border: 1px solid black; margin-right: 5px;"></span> SUPPORT SERVICES
	<span style="display: inline-block; width: 15px; height: 15px; background-color: #CCCCFF; border: 1px solid black; margin-right: 5px;"></span> SPECIAL SUBJECT

- (6) 4TH GRADE CLASSROOMS
- (6) 5TH GRADE CLASSROOMS
- (3) SPECIAL ED CLASSROOMS
- (1) FULL SIZE SUPPORT CLASSROOM [OT/PT/SPEECH]
- (6) SUPPORT SERVICES
- (1) FULL SIZE SHARED SPECIAL SUBJECT CLASSROOM [ART/MUSIC/CHORUS]
- BAND ON STAGE

Playground

OVERALL FLOOR PLAN

4-5

# Building Map TBD

K-5 Configuration  
Three Schools  
(K-5; K-5; K-5)

# K-5 Grade Configuration

Three School Buildings: (K-5); (K-5); (K-5)  
(36 Classroom Sections)

- Twelve grade level classrooms in each building
  - Two sections in each of the six grade levels
- **Nine** self-contained special education classrooms
  - Students placed in K-5 buildings may be transported out of their attendance zones: Two sections per grade level helps with balancing the make-up of the grade level
    - ❖ In K-5, **four** separate special education classrooms
      - 15-1 (K-1); 12-1-1 (K-1); **8-1-1 (K-2); 6-1-1 (K-1)\***
    - ❖ In K-5, **two** separate special education classrooms
      - **15-1 (2-3); 12-1-1 (2-3)**
    - ❖ In K-5, **three** separate special education classrooms
      - 15-1 (4-5); 12-1-1 (4-5); 8-1-1 (3-5)

# Grade Center Configuration

## Three School Buildings: (K-5); (K-5); (K-5)

### (36 Classroom Sections)

- Band and Chorus

- Band and chorus in all three school buildings

- Art and Music Classrooms

- Separate art and music classrooms in WP (2)
- **No** art or music classroom shown in SS (0)
- Separate art and music classrooms in NB (2)
- DV, a **shared** art/music classroom(1) and band on stage

# Grade Center Configuration

## Three School Buildings: (K-5); (K-5); (K-5)

### (36 Classroom Sections)

- Four Pre-K Classrooms in a Separate School Building. These classrooms do not currently fit in any of the three school buildings based on the current student enrollment and the number of special education classrooms.
- Space for Support Services

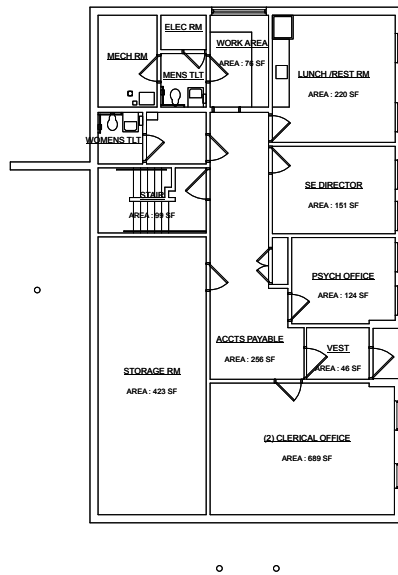
# Summary of Elementary Full Size Classrooms

## 2023-24 Summary of Elementary Full Size Classrooms by Building

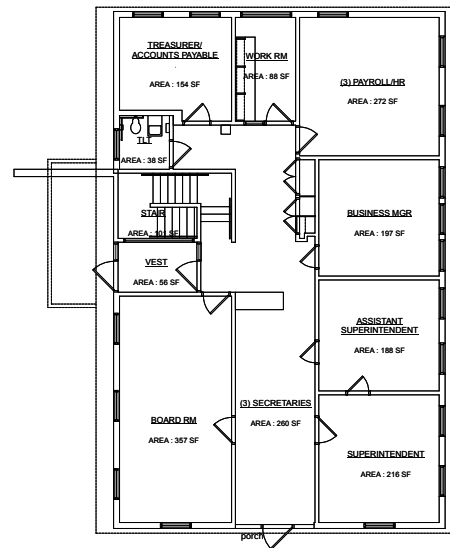
School	Grade Levels	# of Students	# of Full Size Common Branch Classroom	# of Full Size Special Education Classrooms	# of Other Full Size Classrooms	Total # of Full Size Classrooms
Durhamville	K-5	217	12	3	2	17
North Broad	K-5	173	8	0	9	17
Seneca Street	K-5	203	12	0	3	15
Willard Prior	Pre-K-5	140 (+ 81 Pre-K)	6 + Pre-K (4)	5 + 1RR	4	20
Total	K-5	733 (+ 81 Pre-K)	38 + Pre-K (4)	9	18	69

# Draft Building Maps

District Office and Full Day Pre-K  
One Separate Building

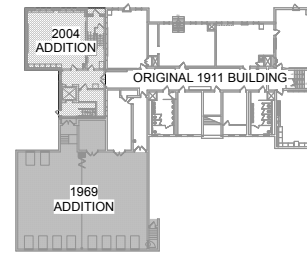


FIRST FLOOR PLAN



GROUND FLOOR PLAN





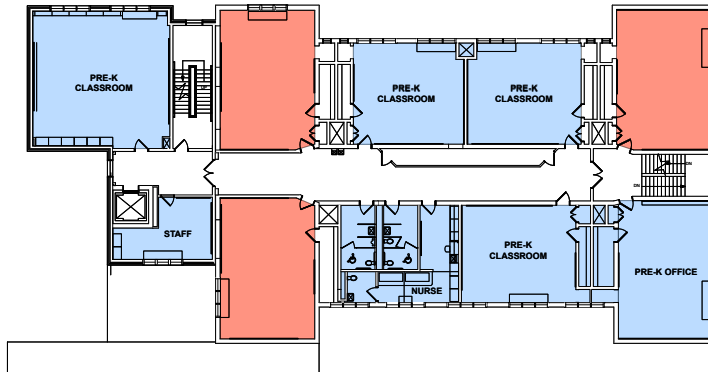
BUILDING VINTAGE PLAN

LEGEND

- Pre-K Space
- District Office Space
- Extra Classroom Space

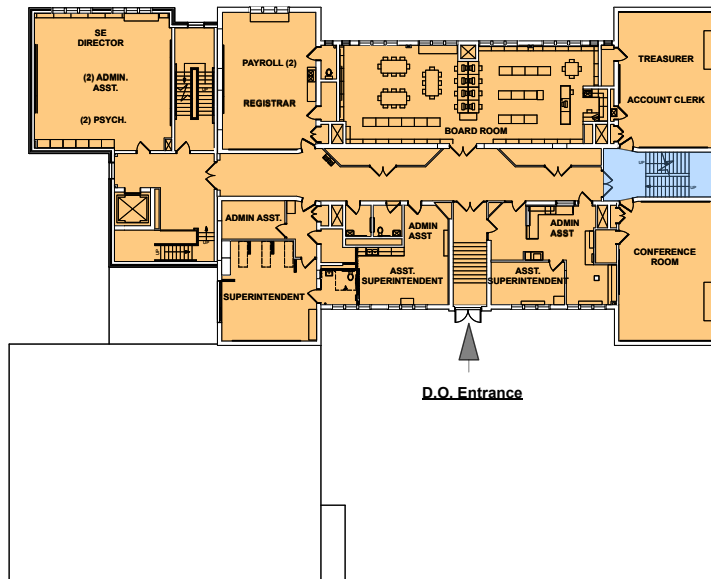
- (4) Pre-K Classrooms with no toilet rooms
- (3) Spaces for additional full size classrooms with no toilet room on 2nd floor
- (3) Spaces for additional full size classrooms with no toilet room in Basement

Pre-K Classroom Floor



SECOND FLOOR PLAN

D.O. Floor



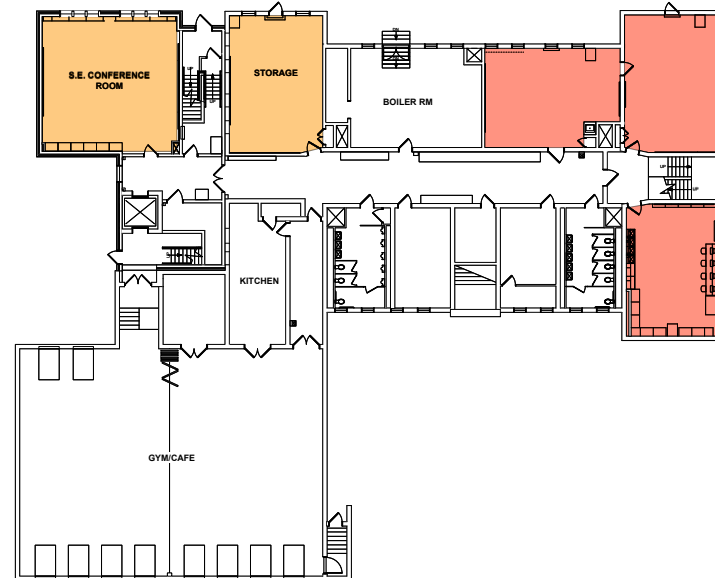
FIRST FLOOR PLAN

Pre-K Entrance

D.O. Entrance

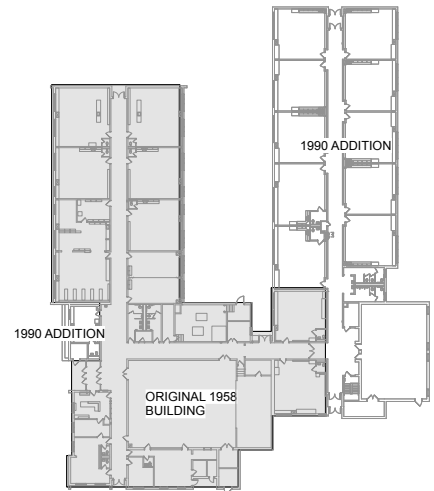
Playground

Parking Lot



Parking Lot

BASEMENT FLOOR PLAN



FIRST FLOOR VINTAGE PLAN

LEGEND

- Pre-K Space
- District Office Space
- Extra Classroom Space

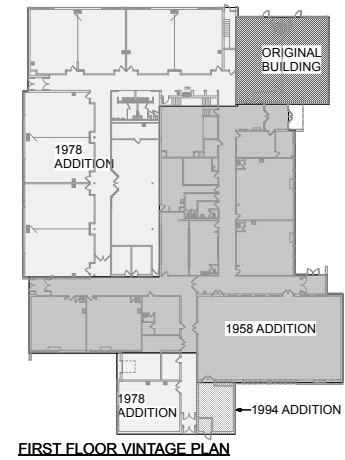
- (4) Pre-K Classrooms with toilet rooms
- (1) Space for additional full size classroom with toilet room in Pre-K wing
- (1) Space for additional full size classroom with no toilet room in Pre-K wing
- (3) Spaces for additional full size classroom with no toilet rooms in D.O. wing
- (1) Extra Gym space

OVERALL FLOOR PLAN



OVERALL FLOOR PLAN

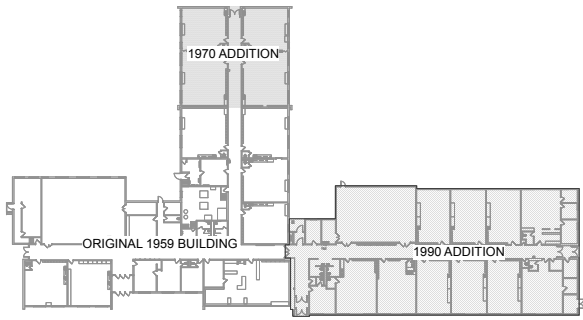
Castallo and Silky LLC



**LEGEND**

- Pre-K Space
- District Office Space
- Extra Classroom Space

(4) Pre-K Classrooms with toilet rooms  
 (2) Spaces for additional full size classrooms with toilet room  
 (1) Space for additional full size classrooms with no toilet room



FIRST FLOOR VINTAGE PLAN



**LEGEND**

- Pre-K Space
- District Office Space
- Extra Classroom Space

(4) Pre-K Classrooms with no toilet rooms  
 (5) Spaces for additional full size classrooms with toilet room in Pre-K Wing  
 (1) Space for additional full size classrooms with toilet room in DO wing

FIRST FLOOR PLAN

# Questions ????



Castallo & Silky LLC-Education Consultants